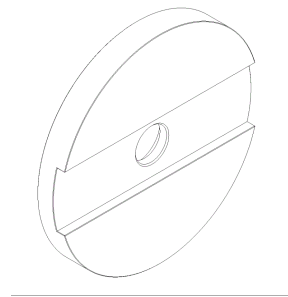
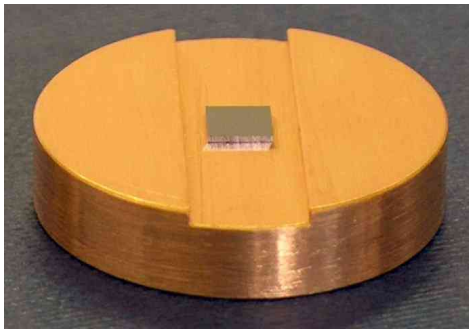


## Mounted SOC data sheet SOC- $\lambda$ -A-T- $\tau$ -5.0-25.4g

GaAs chip area	standard:	5.0 mm x 5.0 mm
	optional:	other dimensions on request
Chip material		semi-insulating GaAs
Chip thickness	standard:	625 $\mu$ m
	optional:	150 $\mu$ m
Back side		polished and antireflection (AR) coated for the design wavelength $\lambda$
Front side protection		the SOC is protected with a dielectric front layer

The SOC chip is glued on a gold-plated Cu-cylinder with 25.4 mm outer diameter and a 4 mm  $\varnothing$  center hole using a thermal conducting paste.

Mounted SOC



**Mount:** gold-plated copper cylinder with: 25.4 mm outer diameter  
4 mm diameter center hole  
3 mm thickness

